



Securing a Brighter Future

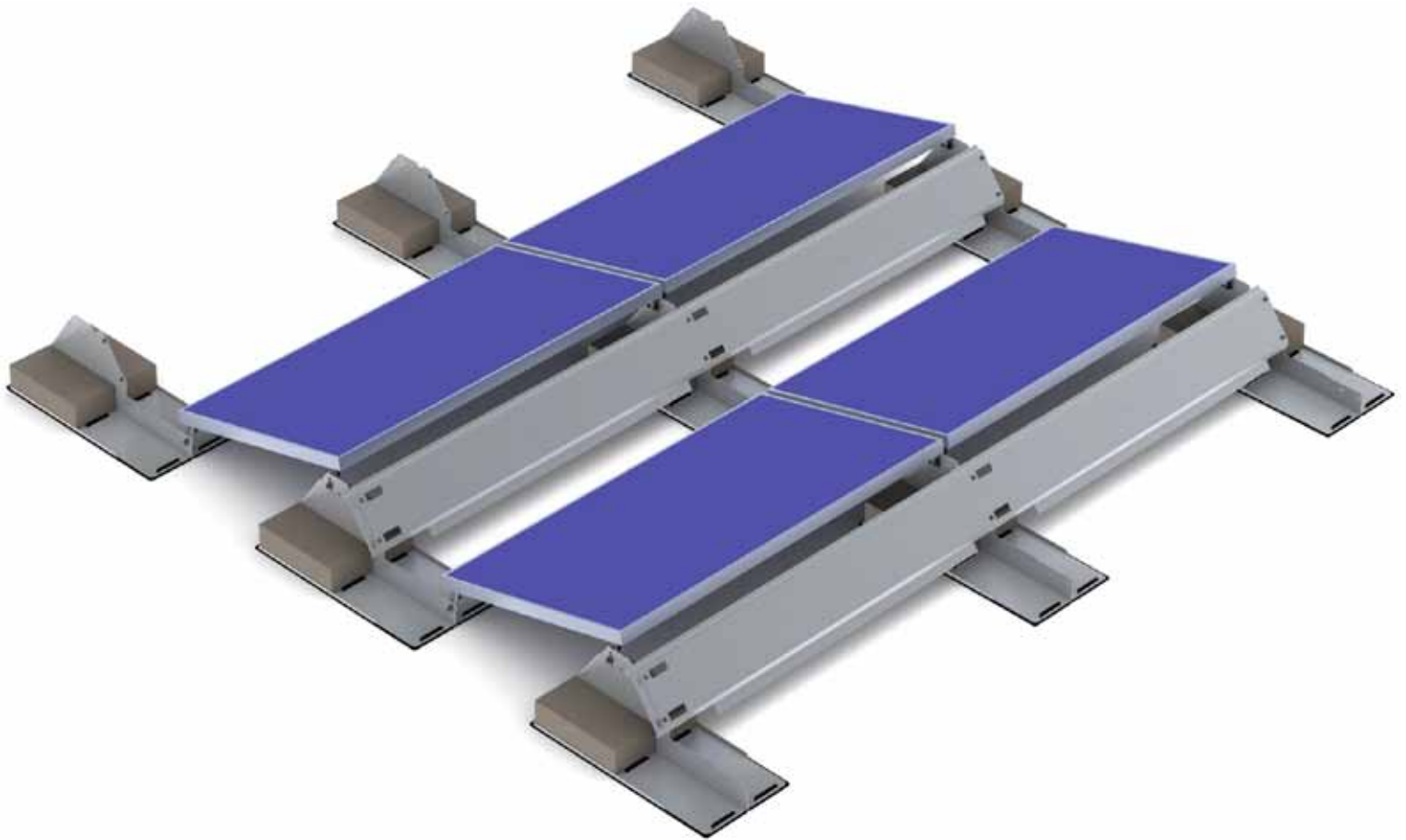
LOWEST LIFE-CYCLE COST

CUTTING-EDGE ENGINEERING

WORLD-CLASS SERVICE

ENVIRONMENTALLY FRIENDLY

Polar Bear FR *Gen II*



POLAR BEAR[®] FR *Gen II* *10 Degree*

PanelClaw was founded with a single mission: to develop a new generation of efficient mounting systems for photovoltaic modules, making solar energy an increasingly accessible, cost-effective, and environmentally responsible solution.



Securing a Brighter Future

Polar Bear *Gen II* 10 Degree Flat Roof Mounting System

Polar Bear FR *Gen II* - 10 Degree is a next generation flexible ballast mounting solution for commercial flat roofs. Its innovative 3 component design and factory-integrated features enable integrators to overcome installation challenges and deliver lower life-cycle costs

3 Polar Bear Components

Support

- Universal, module-independent design
- *New!* Increased inter-row spacing flexibility for optimal array design
- *New!* Additional mounting holes for wavy roof friendliness
- *New!* Integrated recycled rubber roof protection pad for greater install speed
- *New!* Multi-purpose tab for enhanced wire management or integrated electrical ground lug (when necessary)
- Integrated PEM studs for easy wind deflector installation
- Stainless steel fastener kit with just two nut and bolt sizes
- Mechanical attachment option
- Available in aluminum or G90 steel

Wind Deflector

- *New!* A-thermalized design for enhanced roof protection
- Chamfered edges and light weight construction facilitate easy handling and safe installation
- *New!* Common deflector for Polar and Grizzly Bear 10 Degree products
- Available in aluminum or G90 steel

Claw

- Universal to all PanelClaw mounting systems
- *New!* UL 2703 certified for electric bonding and grounding
- Factory-installed module-mounting stainless steel screw
- Serrated design to increase clamping power
- UL and ETL tested to 1703 by major module vendors



UL 2703 Recognized E339731
Electric Bonding and Grounding



Application

Flat Roof
(max slope 5 degrees)

Installation Speed

160-180 modules per day
(3 person crew)

Module Tilt Angle

10-12 degrees
(dependent on module width)

Module Orientation

Landscape

Basic Wind Speed

Up to 120 mph (193 km/h)

Wind Exposure Category

B and C (D upon request)

Array Platform Load

~3-8 psf (~14-39 kg/m²)
(racking, ballast and modules)

Building Height

Up to 60 feet (18.3 meters)
(custom upon request)

Standard Warranty

10 years

FOR PRODUCT AND SALES INFORMATION, CONTACT:

978.688.4900

info@panelclaw.com

sales@panelclaw.com

www.panelclaw.com

WASI SOLAR
European Distribution Partner