



*Securing a Brighter Future*

LOWEST LIFE-CYCLE COST

CUTTING-EDGE ENGINEERING

WORLD-CLASS SERVICE

ENVIRONMENTALLY FRIENDLY



## PANDA BEAR GM

**PanelClaw** was founded with a single mission: to develop a new generation of efficient mounting systems for photovoltaic modules, making solar energy an increasingly accessible, cost-effective, and environmentally responsible solution.

## Panda Bear GM *Ground Mounting System*

Panda Bear GM (Ground Mount) is an eco-friendly, ballasted mounting solution for ground applications. Its streamlined design features just three major components and significant factory pre-assembly - innovations that turn construction projects into simple installations.

### 3 Panda Bear Components

#### Support

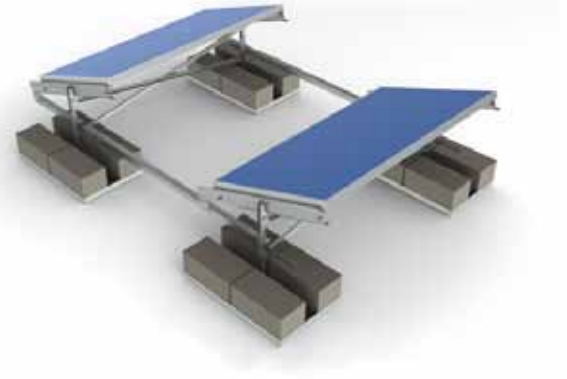
- Universal, module-independent design
- No heavy equipment or ground prep required
- Ballast pan, post, and bracket pre-assembled
- Adjustable height post and pivoting ballast pan to accommodate uneven terrain
- Integrated electrical ground lug tested by nationally recognized laboratories (UL and ETL)
- Pre-installed PEM studs for easy cross-brace attachment
- Stainless steel fastener kit with just two nut and bolt sizes
- Available in G90 steel or aluminum

#### Cross Brace

- Factory pre-assembled to speed installation
- Curved edges and lightweight construction for safe and easy handling
- Slotted mounting holes to accommodate uneven terrain

#### Claw

- Universal to all PanelClaw mounting systems
- Serrated design to increase clamping power
- Factory-installed module-mounting stainless steel screw
- *New!* UL 2703 certified for electric bonding and grounding
- UL and ETL tested to 1703 by major module vendors



#### Application

Open field and landfill

#### Installation Speed

140-180 modules per day  
(4 person crew)

#### Module Tilt Angle

10, 20, 30 degrees  
(custom upon request)

#### Module Orientation

Landscape

#### Basic Wind Speed

Up to 120 mph (54 m/s)

#### Wind Exposure Category

B and C (D upon request)

#### Array Platform Load

~7-12 psf (~.34-.57 kN/m<sup>2</sup>)  
(racking, ballast, and modules)

#### Standard Warranty

10 years

### FOR PRODUCT AND SALES INFORMATION, CONTACT:

978.688.4900  
info@panelclaw.com  
sales@panelclaw.com  
[www.panelclaw.com](http://www.panelclaw.com)  
1600 Osgood Street  
Bldg 20, Suite 2-23  
North Andover, MA  
U.S.A. 01845