



Securing a Brighter Future

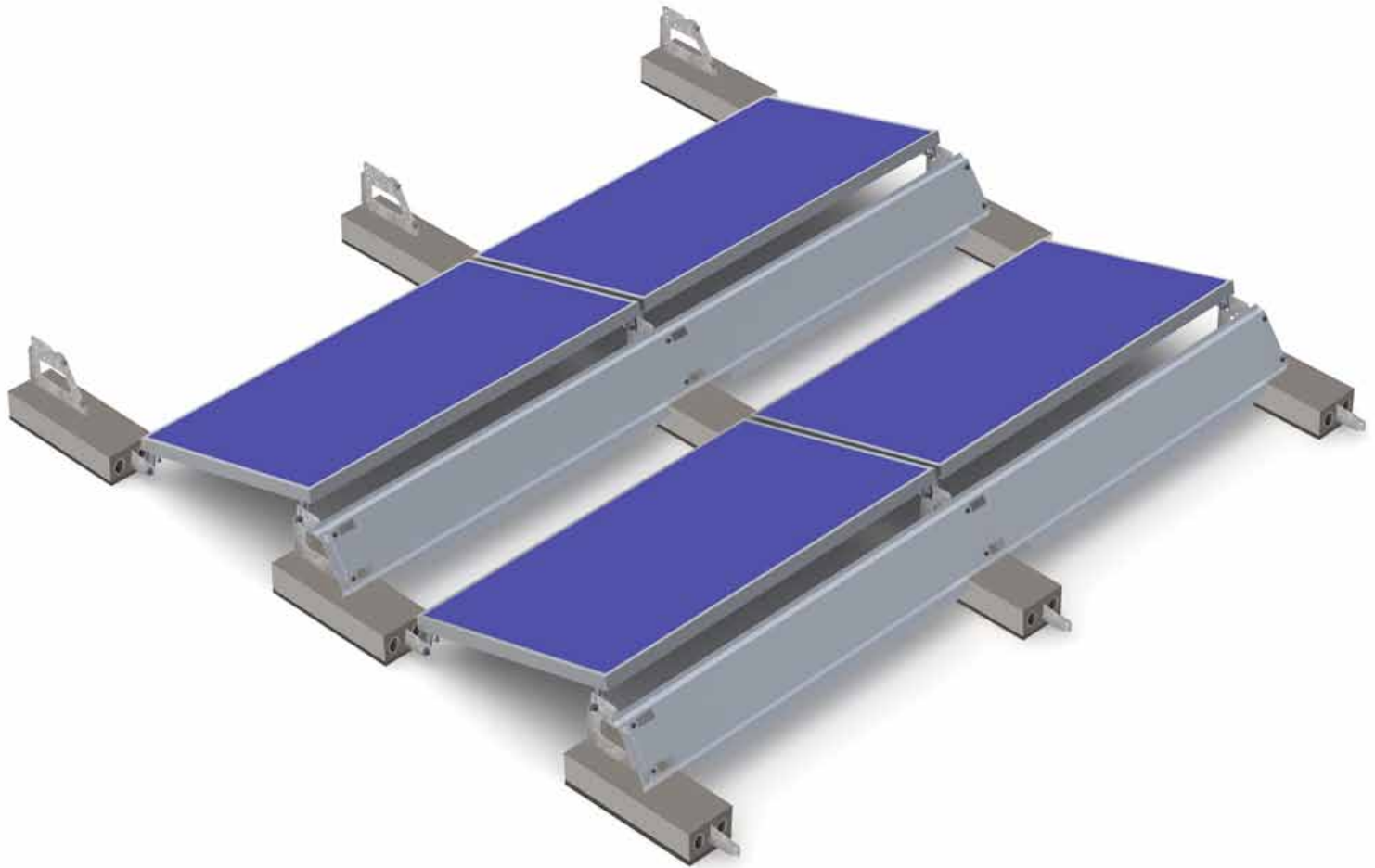
LOWEST LIFE-CYCLE COST

CUTTING-EDGE ENGINEERING

WORLD-CLASS SERVICE

ENVIRONMENTALLY FRIENDLY

Grizzly Bear FR *Gen II*



GRIZZLY BEAR[®] FR *Gen II* *10 Degree*

PanelClaw was founded with a single mission: to develop a new generation of efficient mounting systems for photovoltaic modules, making solar energy an increasingly accessible, cost-effective, and environmentally responsible solution.

Grizzly Bear *Gen II* 10 Degree Flat Roof Mounting System

Grizzly Bear FR *Gen II* is an eco-friendly, integrated ballast mounting solution for commercial flat roofs. Its innovative 3 component design overcomes common roof installation challenges enabling integrators to maximize array construction speed. Grizzly Bear offers the lowest life-cycle system costs of any product in its class.

3 Grizzly Bear Components

Support

- Universal, module-independent design
- Integrated ballast and wire-management chases
- Integrated recycled rubber roof protection pad for rapid installation
- Multiple mounting holes for wavy roof friendliness
- *New!* Inter-row spacing flexibility for optimal array design
- *New!* Multi-purpose tab for enhanced wire management or integrated electrical ground lug (when necessary)
- Integrated PEM studs for easy wind deflector installation
- Stainless steel fastener kit with just two nut and bolt sizes
- Mechanical attachment option

Wind Deflector

- *New!* A-thermalized design for enhanced roof protection
- Chamfered edges and light weight construction facilitate easy handling and safe installation
- *New!* Common deflector for Polar and Grizzly Bear 10 Degree products
- Available in aluminum or G90 steel

Claw

- Universal to all PanelClaw mounting systems
- *New!* UL 2703 certified for electric bonding and grounding
- Factory-installed module-mounting stainless steel screw
- Serrated design to increase clamping power
- UL and ETL tested to 1703 by major module vendors



 UL 2703 Recognized E339731
Electric Bonding and Grounding



Application

Flat Roof
(max slope 5 degrees)

Installation Speed

190-210 modules per day
(3 person crew)

Module Tilt Angle

10-12 degrees
(dependent on module width)

Module Orientation

Landscape

Basic Wind Speed

Up to 100 mph (161 km/h)

Wind Exposure Category

B and C (D upon request)

Array Platform Load

~4 psf (~19 kg/m²)
(racking, ballast and modules)

Building Height

Up to 60 feet (18.3 meters)
(custom upon request)

Standard Warranty

10 years

FOR PRODUCT AND SALES INFORMATION, CONTACT:

978.688.4900

info@panelclaw.com

sales@panelclaw.com

www.panelclaw.com

 **WASI** SOLAR
European Distribution Partner