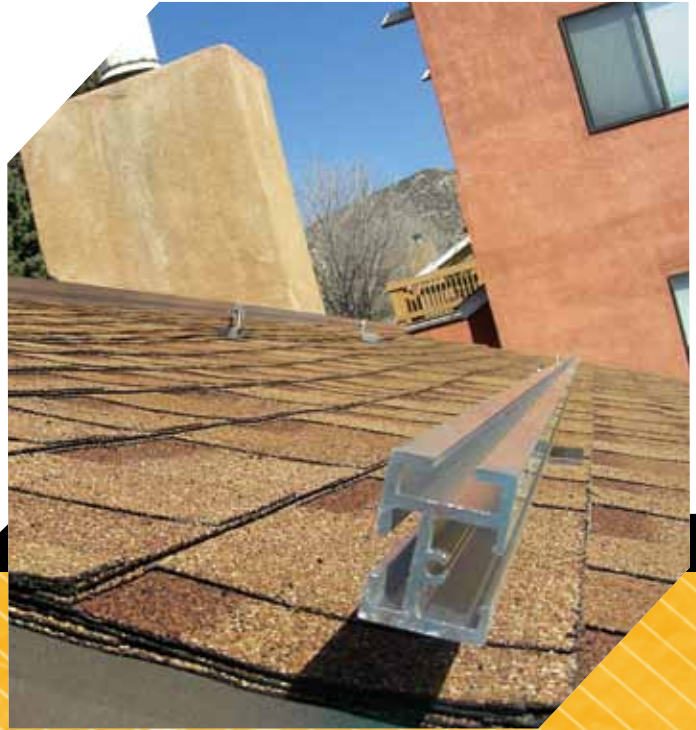


**POWER RAIL™**  
Top-Clamping PV Mounting System  
P6 and P8 Rails



-  COMMUNICATIONS
-  ENERGY
-  SPECIAL INDUSTRIES
-  SOLAR

 **POWER-FAB®**  
Quality Hardware for the PV Industry



# POWER RAIL™ Roof Mounting System

The top-clamping PV module mounting system is engineered to reduce installation costs and provide maximum strength for parallel-to-roof or tilt up mounting applications.



Cable Management

The Power Rail top-clamping mounting system is designed with the professional PV solar installer in mind. The top-clamping rails utilize a single tool with a revolutionary RAD™ Fastener for faster bolt placement. The unique shape of the RAD provides an anti-rotation feature, locking the bolt in the proper orientation when installed. The high

strength rigid rails also include an integral wiring channel for securing cables and providing a professional finish. The POWER RAIL Mounting System features the industry's broadest selection of mounting supports, designed for secure and water tight attachments to any roof style.



Flashed Supports

## Mounting Rail Options

**P6** Engineered to save cost on shorter span applications

**P8** Engineered for longer span and heavier snow conditions

\* Reference Rail Span and Cantilever Charts on the back of this sell sheet.

## Features

### High Strength Reliable Design

- Engineered rail profiles for maximum strength-to-weight ratio
- Structural Aluminum rigid rail construction
- High Strength stainless steel module clamps and hardware

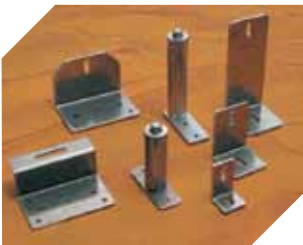
### Reduced Installation Time and Costs

- Single Tool Assembly – all 5/16" hardware
- RAD Fastener for quick bolt placements anywhere along rail
- Under flange clamping options
- Integral Wiring Channel for securing cables
- Standard lengths up to 27 feet eliminate costly rail splices

- Snap-In WEEB Integral module grounding option

### Flexible Mounting Options

- Height adjustable "L" mounting feet
- Tilt Feet up to 10 degrees
- Solid Aluminum Power Post™ stanchions
- Easy Feet™ attachment anywhere on metal or composite roof decking
- PV Flashing mounting supports
- Telescoping and One-Piece Tilt Kits up to 65 degrees
- Easy Feet Tile Hooks



# POWER RAIL™ Solar Mounting System



## Standard Rail Lengths

P6 Part #	P8 Part #	Length
P6-84	P8-84	84"
P6-126	P8-126	126"
P6-162	P8-162	162"
P6-204	P8-204	204"
P6-240	P8-240	240"
P6-282	P8-282	282"
P6-324	P8-324	324"



Power Rail P6 – Extrusion

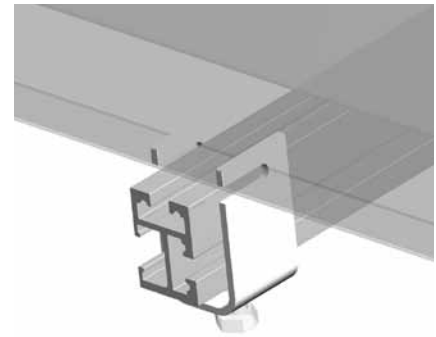


Power Rail P8 – Extrusion



## Universal End Clamp

- Simply slides under rail and clamps module flange
- Secures any framed PV module
- Improved aesthetics allows module frame to be placed flush with rail end
- High strength stainless steel construction

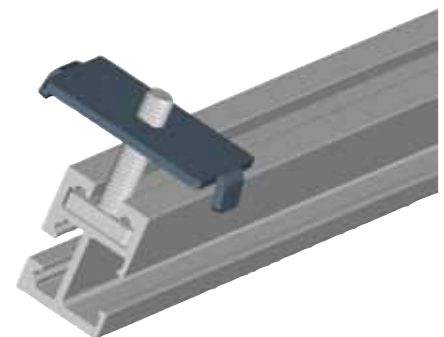


P6 Universal End Clamp



## SS Mid Clamp with Revolutionary RAD™ Fastener

- Twist in anywhere along rail channel – avoid sliding bolts
- Visual indicator of bolt orientation
- “D” hole on mating clamp locks bolt from rotating
- Tight 3/8” module spacing



RAD Fastener with SS mid clamp locked in place

Refer to Power Rail Catalog for all mounting and clamping options.

# Wind and Snow Loading Capability

## P6 Rail – Span/Cantilever Distances (inches)

	SPAN/C'VER	SNOW LOAD (PSF)										
		0	10	20	30	40	50	60	70	80	90	100
WIND SPEED* (MPH)	90	72/36	60/32	54/26	48/24	43/21	40/20	36/18	33/16	31/15	29/14	28/14
	100	60/32	58/28	48/24	46/23	42/21	38/19	36/18	33/16	31/15	29/14	28/14
	110	58/28	54/26	48/24	44/22	40/20	37/18	35/17	33/16	31/15	29/14	28/14
	120	54/26	54/26	46/23	42/21	39/19	36/18	34/17	32/16	31/15	29/14	28/14
	130	48/24	48/24	44/22	40/20	37/18	35/17	33/16	32/16	30/15	29/14	28/14

\*Exposure C Category

Please refer to design guidelines and ASCE requirements for more information.

## P8 Rail – Span/Cantilever Distances (inches)

	SPAN/C'VER	SNOW LOAD (PSF)										
		0	10	20	30	40	50	60	70	80	90	100
WIND SPEED* (MPH)	90	96/48	92/46	80/40	72/36	66/33	62/31	58/29	52/26	50/25	46/23	44/22
	100	88/44	86/43	76/38	68/34	64/32	60/30	56/28	52/26	50/25	46/23	44/22
	110	80/40	80/40	72/36	66/33	62/31	58/29	54/27	52/26	50/25	46/23	44/22
	120	74/37	74/37	68/34	64/32	60/30	56/28	52/26	50/25	48/24	46/23	44/22
	130	68/34	68/34	66/33	60/30	56/28	54/27	52/26	48/24	46/23	44/22	44/22
	140	64/32	64/32	62/31	58/29	54/27	52/26	50/25	48/24	46/23	44/22	42/21
	150	60/30	60/30	60/30	56/28	52/26	50/25	48/24	46/23	44/22	42/21	42/21

\*Exposure C Category

Please refer to design guidelines and ASCE requirements for more information.



4000-B Vassar Drive NE  
Albuquerque, New Mexico 87107  
USA

Telephone: 800.260.3792  
Fax: 505.889.3548  
Web Site: [www.DPWSolar.com](http://www.DPWSolar.com)  
E-mail: [info@power-fab.com](mailto:info@power-fab.com)

© 2011 Preformed Line Products  
Printed in U.S.A.  
SL-SS-1086-1  
10.11.5C

