



Sealed Lead-Acid Battery

UPG No. D5745

UB12180

Maintenance-Free

Absorbant Glass Mat (AGM) technology for superior performance. Valve regulated, spill proof construction allows safe operation in any position. Approved for transport by air. D.O.T., I.A.T.A., F.A.A. and C.A.B. certified. U.L. recognized under file number MH 20567.

Specification

Nominal Voltage	12 volts		
Nominal Capacity	77° F (25° C)		
20-hr. (0.90A)	18 Ah		
10-hr. (1.67A)	16.74 Ah		
5-hr. (3.06A)	15.30 Ah		
1-hr. (10.80A)	10.80 Ah		
Approximate Weight	11.9 lbs (5.4 kgs)		
Internal Resistance (approx.)	18mΩ		
Shelf Life (% of normal capacity at 77° F (25° C))			
3 Months	6 Months	12 Months	
91%	82%	64%	
Temperature Dependency of Capacity	(20 hour rate)		
104° F	77° F	32° F	5° F
102%	100%	85%	65%



*Can be used outdoors.

Charge Method (Constant Voltage)

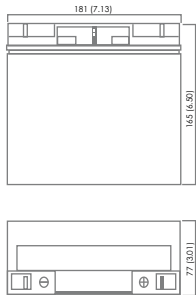
Cycle Use (Repeating Use)

Initial Current	6.3 A or smaller
Control Voltage	14.5 - 14.9 V

Float Use

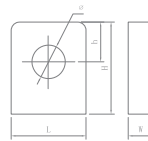
Control Voltage	13.6 - 13.8 V
-----------------	---------------

Physical Dimensions: in (mm)



L: 7.13in (181.1 mm)
W: 3.01in (76.5 mm)
H: 6.50in (165.1 mm)
TH: 6.57in (166.9 mm)
 Tolerances are +/- 0.04 in. (+/- 1mm) and +/- 0.08 in. (+/- 2mm) for height dimensions. All data subject to change without notice.

Terminals



L Series (L Type Terminal)

Dimension Type	L	W	H	h	ø
L3	25.5	7.0	22.0	10.5	5.8
L4	26.5	8.0	24.5	12.0	9.0

Constant Current Discharge Characteristics Unit:A (25°C, 77°F)

F.V/Time	5MIN	10MIN	15MIN	30MIN	1HR	2HR	3HR	4HR	5HR	8HR	10HR	20HR
1.60V	48.2	31.4	24.1	14.8	8.83	5.12	3.66	2.89	2.33	1.53	1.23	0.645
1.67V	44.6	30.0	23.1	14.6	8.86	5.03	3.64	2.88	2.32	1.52	1.22	0.624
1.70V	42.9	28.2	22.7	14.5	8.57	5.00	3.63	2.87	2.31	1.51	1.21	0.615
1.75V	39.9	28.0	22.0	14.3	8.45	4.92	3.61	2.86	2.30	1.50	1.20	0.600
1.80V	36.9	26.7	21.3	14.0	8.30	4.82	3.60	2.84	2.28	1.49	1.18	0.585
1.85V	33.9	25.3	20.6	13.8	8.16	4.80	3.58	2.82	2.27	1.48	1.17	0.570

Constant Power Discharge Characteristics Unit:W (25°C, 77°F)

F.V/Time	5MIN	10MIN	15MIN	30MIN	1HR	2HR	3HR	4HR	5HR	8HR	10HR	20HR
1.60V	48.2	31.4	24.1	14.8	8.83	5.12	3.66	2.89	2.33	1.53	1.23	0.645
1.67V	44.6	30.0	23.1	14.6	8.86	5.03	3.64	2.88	2.32	1.52	1.22	0.624
1.70V	42.9	28.2	22.7	14.5	8.57	5.00	3.63	2.87	2.31	1.51	1.21	0.615
1.75V	39.9	28.0	22.0	14.3	8.45	4.92	3.61	2.86	2.30	1.50	1.20	0.600
1.80V	36.9	26.7	21.3	14.0	8.30	4.82	3.60	2.84	2.28	1.49	1.18	0.585
1.85V	33.9	25.3	20.6	13.8	8.16	4.80	3.58	2.82	2.27	1.48	1.17	0.570

www.upgi.com



ISO 9001:2008

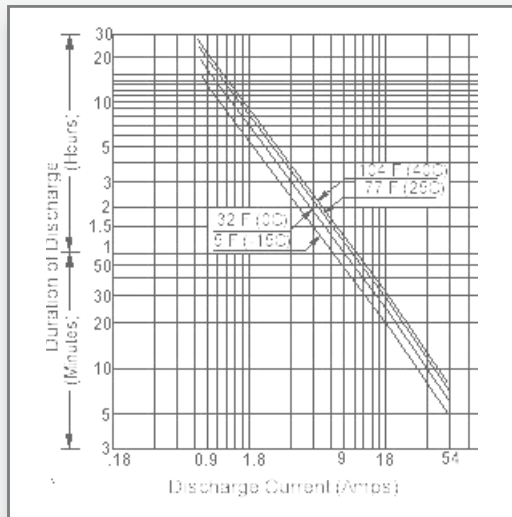
VR062410

1720 Hayden Drive | Carrollton, Texas 75006 | P 469.892.1122 | T 866.892.1122 | F 469.892.1123 | sales@upgi.com

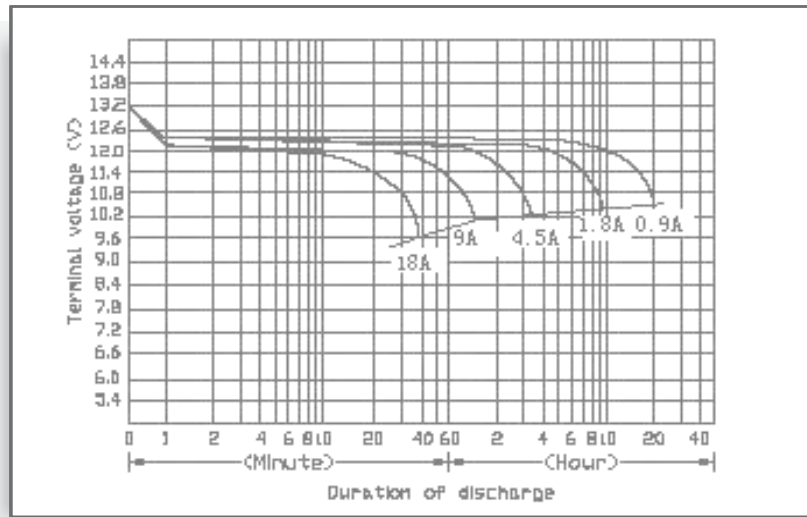
UB12180

Maintenance-Free

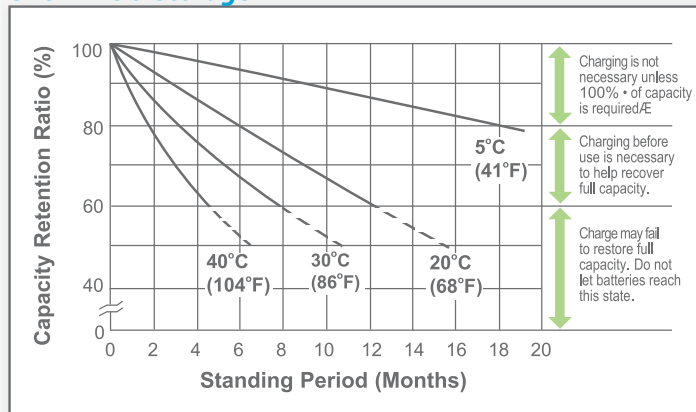
Discharge Time vs. Discharge Current



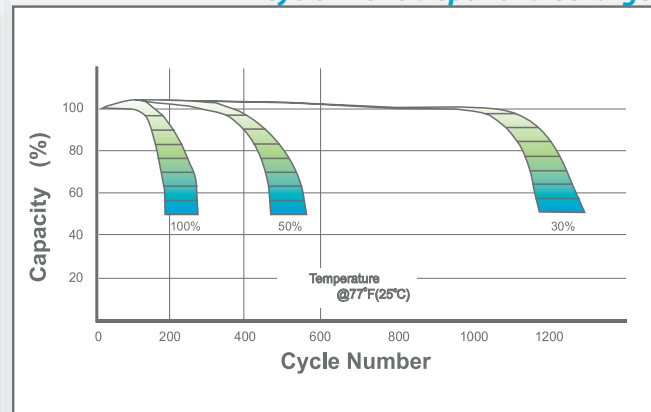
Discharge Characteristics



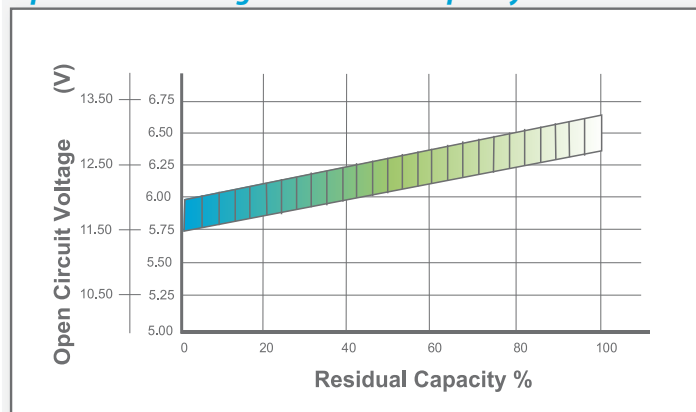
Shelf Life & Storage



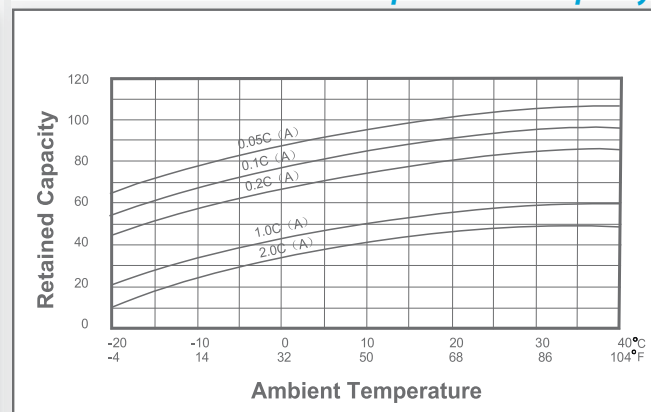
Cycle Life vs. Depth of Discharge



Open Circuit Voltage vs. Residual Capacity



Effect of Temperature on Capacity



Charge Current & Final Discharge Voltage

Application	Charge Voltage (V/Cell)			Max. Charge Current	Final Discharge Voltage V/Cell	Discharge Current (A)	1.75	1.70	1.60	1.30
	Temperature	Set Point	Allowable Range							
Cycle Use	25°C (77°F)	2.45	2.40-2.50	0.35C						
Standby	25°C (77°F)	2.325	2.30-2.35			0.2C > (A)	0.2C < (A) < 0.5C	0.5C < (A) < 1.0C	(A) > 1.0C	



ISO 9001 :2008

Let UPG Power Your Life.

www.upgi.com