

### Specification

Nominal Voltage	12V	
Nominal Capacity(10HR)	150.0AH	
Dimension	Length	485±3mm (19.09 inches)
	Width	170±2mm (6.69 inches)
	Container Height	240±2mm (9.45 inches)
	Total Height (with Terminal)	240±2mm (9.45 inches)
Approx Weight	Approx 42.5 kg (93.7lbs)	
Terminal	T11	
Container Material	ABS	
Rated Capacity	156.0 AH/7.80A	(20hr, 1.80V/cell, 25°C/77°F)
	150.0 AH/15.0A	(10hr, 1.80V/cell, 25°C/77°F)
	130.5 AH/26.1A	(5hr, 1.75V/cell, 25°C/77°F)
	115.2 AH/38.4A	(3hr, 1.75V/cell, 25°C/77°F)
	93.9 AH/93.9A	(1hr, 1.60V/cell, 25°C/77°F)
Max. Discharge Current	1500A (5s)	
Internal Resistance	Approx 3.5mΩ	
Operating Temp. Range	Discharge	-15~50°C (5~122°F)
	Charge	0~40°C (32~104°F)
	Storage	-15~40°C (5~104°F)
Nominal Operating Temp. Range	25±3°C (77±5°F)	
Cycle Use	Initial Charging Current less than 45.0A. Voltage 14.4V~15.0V at 25°C(77°F)Temp. Coefficient -30mV/°C	
	Standby Use No limit on Initial Charging Current Voltage 13.5V~13.8V at 25°C(77°F)Temp. Coefficient -20mV/°C	
Capacity affected by Temperature	40°C (104°F)	103%
	25°C (77°F)	100%
	0°C (32°F)	86%
Self Discharge	Leoch LP series batteries may be stored for up to 6 months at 25°C(77°F) and then a freshening charge is required. For higher temperatures the time interval will be shorter.	



### Applications

- ◆ All purpose
- ◆ Uninterruptable Power Supply (UPS)
- ◆ Electric Power System (EPS)
- ◆ Emergency backup power supply
- ◆ Emergency light
- ◆ Railway signal
- ◆ Aircraft signal
- ◆ Alarm and security system
- ◆ Electronic apparatus and equipment
- ◆ Communication power supply
- ◆ DC power supply
- ◆ Auto control system



### Constant Current Discharge (Amperes) at 25 °C (77°F)

F.V/Time	5min	10min	15min	20min	30min	45min	1h	2h	3h	4h	5h	6h	8h	10h	20h
1.85V/cell	259.2	211.5	185.4	156.6	118.5	90.2	74.3	46.5	35.1	28.8	24.4	21.3	17.1	14.4	7.69
1.80V/cell	311.4	243.0	205.8	171.9	129.9	97.4	79.2	49.2	37.6	30.4	25.6	22.3	17.8	15.0	7.80
1.75V/cell	365.4	267.3	223.2	184.5	137.7	102.4	83.1	51.0	38.4	31.0	26.1	22.7	18.1	15.2	7.94
1.70V/cell	401.4	291.6	238.8	198.9	146.7	107.4	86.7	53.0	39.7	31.8	26.6	23.1	18.4	15.3	8.01
1.65V/cell	435.6	315.0	254.4	210.6	154.2	112.2	90.0	54.5	40.7	32.6	27.2	23.5	18.6	15.5	8.09
1.60V/cell	477.0	339.3	269.4	223.2	162.3	117.6	93.9	56.3	41.7	33.3	27.7	23.9	18.9	15.7	8.18

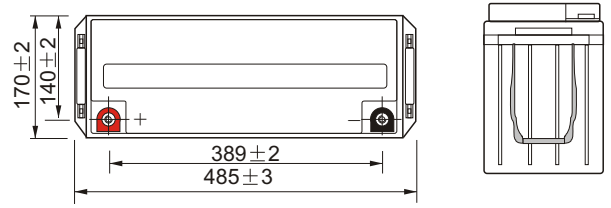
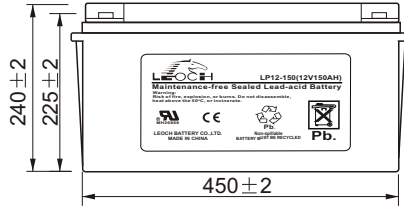
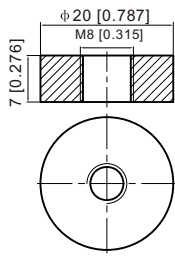
### Constant Power Discharge (Watts) at 25 °C (77°F)

F.V/Time	5min	10min	15min	20min	30min	45min	1h	2h	3h	4h	5h	6h	8h	10h	20h
1.85V/cell	473.9	390.7	346.0	295.2	225.9	173.4	143.2	90.3	68.3	56.3	47.9	41.8	33.7	28.5	15.2
1.80V/cell	563.3	443.6	378.9	319.3	243.8	185.8	152.0	94.8	72.8	59.1	49.9	43.6	35.1	29.6	15.4
1.75V/cell	646.9	480.1	405.8	339.4	256.3	193.4	158.7	98.0	74.0	60.1	50.9	44.2	35.5	29.9	15.7
1.70V/cell	690.9	511.9	428.2	363.1	271.5	202.1	165.1	101.7	76.4	61.4	51.7	44.9	36.0	30.2	15.8
1.65V/cell	739.2	547.9	452.6	381.6	283.1	209.3	170.1	103.9	78.0	62.8	52.6	45.6	36.5	30.5	16.0
1.60V/cell	790.7	576.7	471.4	400.0	295.9	218.1	176.5	106.9	79.6	64.0	53.4	46.3	36.8	30.8	16.1

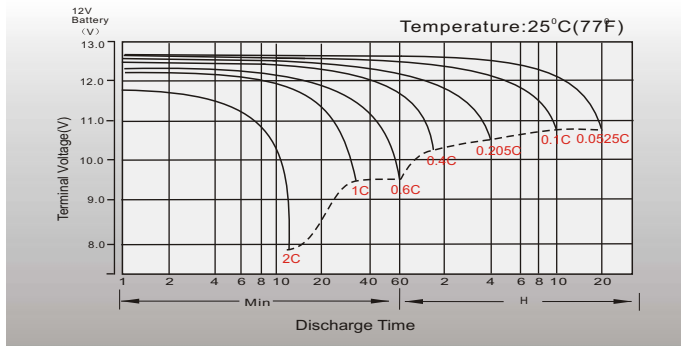
# Dimensions

## T11 Terminal

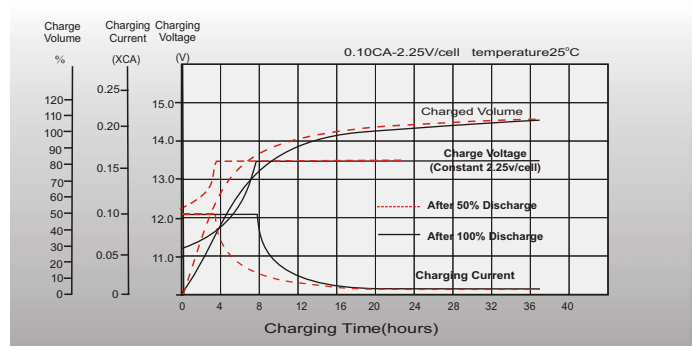
Unit: mm [inches]



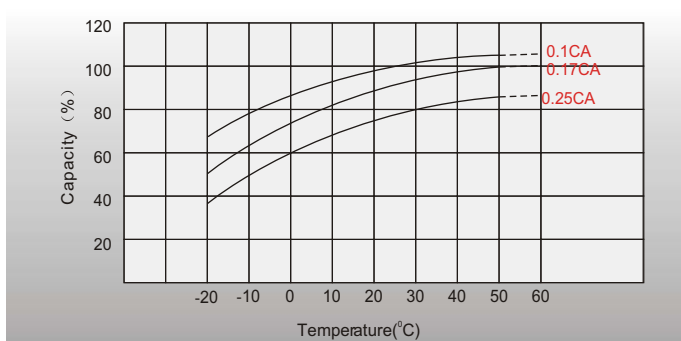
## Discharge Characteristics



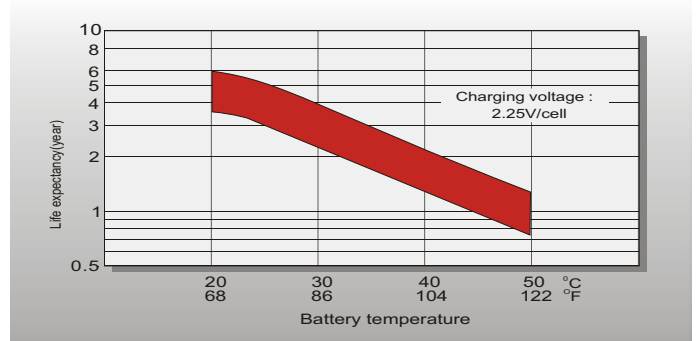
## Float Charging Characteristics



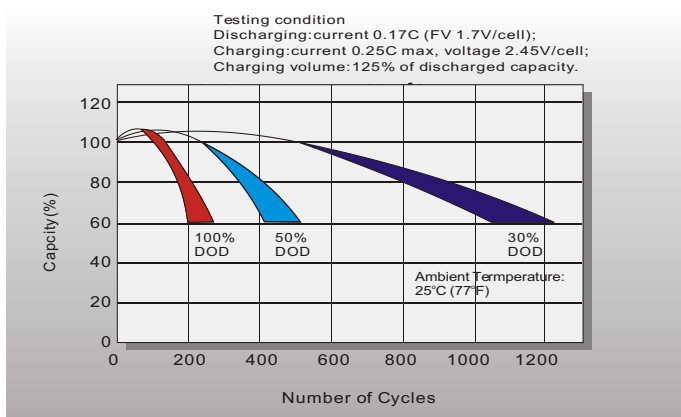
## Temperature Effects in Relation to Battery Capacity



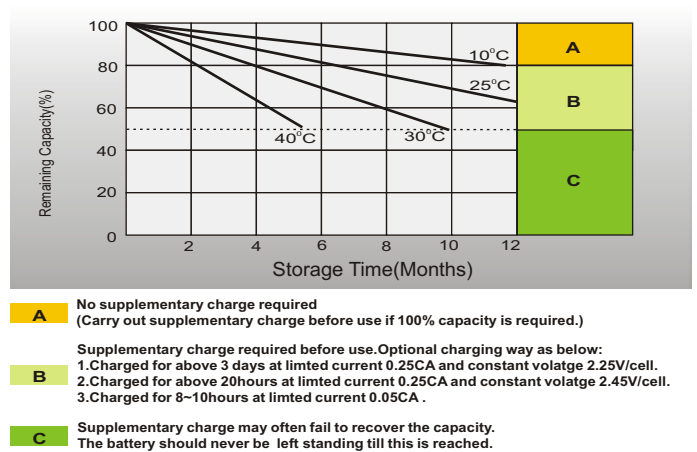
## Effect of Temperature on Long Term Float Life



## Cycle Life in Relation to Depth of Discharge



## Self Discharge Characteristics



## Sales Office

### China sales office:

Add: 5th Floor, Xinbaohui Bldg., Nanhai Blvd.,  
Nanshan, Shenzhen, China. 518052  
Tel: +86-755-86036060 (100 lines)  
Fax: +86-755-26067269  
E-mail: export@leoch.com  
Http://www.leoch.com

### North America sales office:

Add: 19751 Descartes, Unit A,  
Foothill Ranch, CA 92610, USA  
Tel: 949-588-5853  
Fax: 949-588-5966  
E-mail: sales@leoch.us  
Http://www.leoch.us

### Europe sales office:

Add: 9B Wheatstone Park, Waterwells  
Business Park, Gloucester, GL2 2AQ. UK.  
Tel: +44(0) 1452 729428  
Fax: +44 (0)1452-690125  
E-mail: Sales.Europe@leoch.com